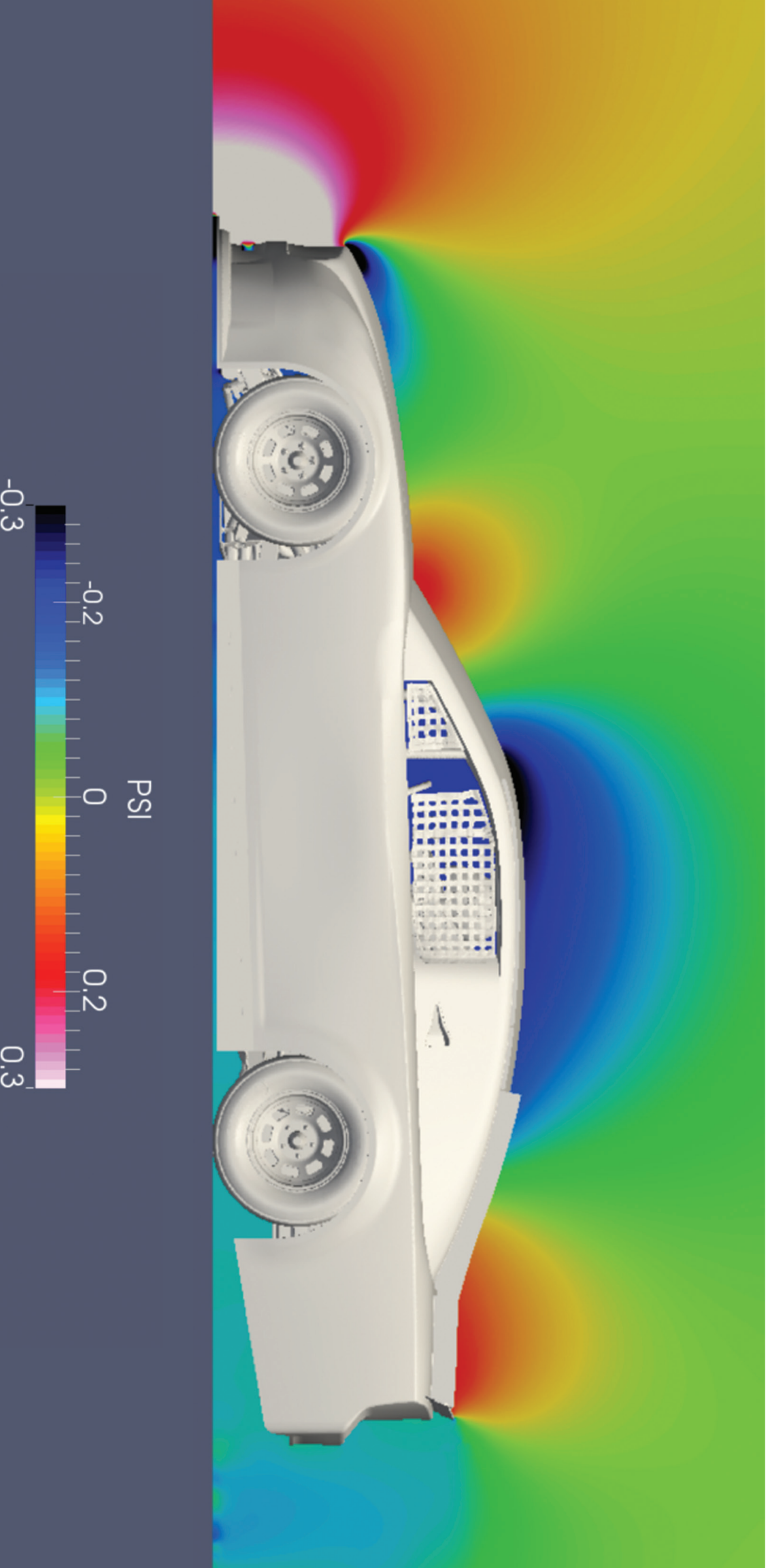


RACE CAR AIRFLOW

The way air flows around a NASCAR race car determines how much pressure the car is under. Pressure is measured by PSI, which means pounds per square inch. Areas that allow the air to flow quickly experience low pressure. Areas where the air gets trapped and flows slowly experience high pressure.



Use the color bar above to identify the areas of the car that experience the highest pressure and the lowest pressure.