



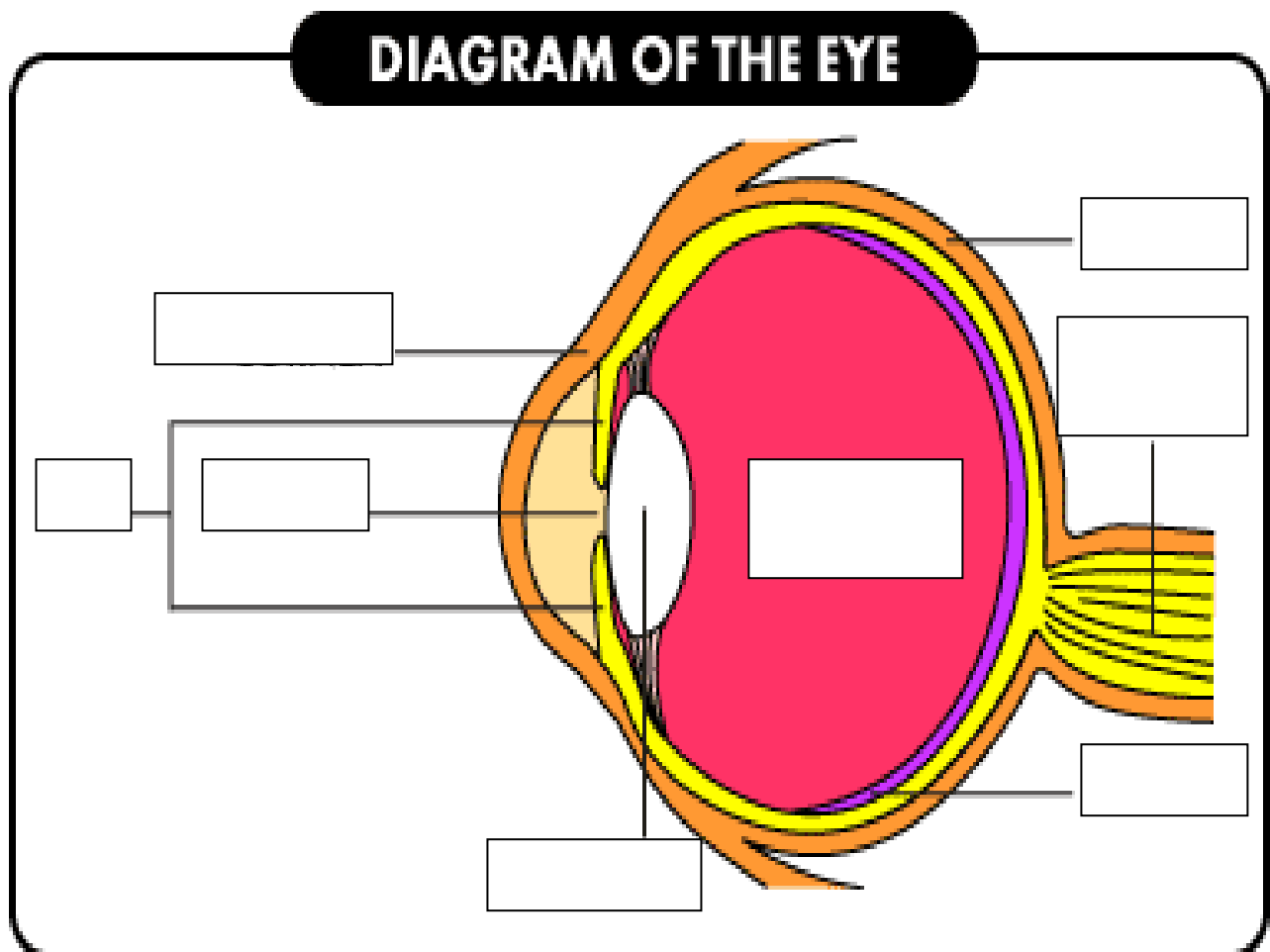
Eye Vocabulary

1. cornea- the transparent convex anterior portion of the eyeball that covers the iris and the pupil and is continuous with the sclera
2. pupil- the opening of the iris
3. iris- the colored part of the eye that regulates the amount of light permitted to enter the eye. (remember, the more light, the smaller the opening)
4. sclera- the white part of the eye that protects and covers most of the eye
5. retina- the innermost coat of the back of the eye, formed of light-sensitive nerve endings that carry visual impulse to the optic nerve.-the retina may be compared to the film of a camera-this is where the rod and cone cells are located
6. optic nerve- sends visual impulses to the brain from the retina
7. lens- helps to focus light on the retina-located behind the iris, it is clear and colorless
8. vitreous humor- clear, jelly-like substance that forms two thirds of the eye's volume and gives the eye its shape
9. aqueous humor- the clear, watery fluid circulating in the chamber of the eye between the cornea and the lens
10. macula- a small area in the retina that provides our most central, acute vision

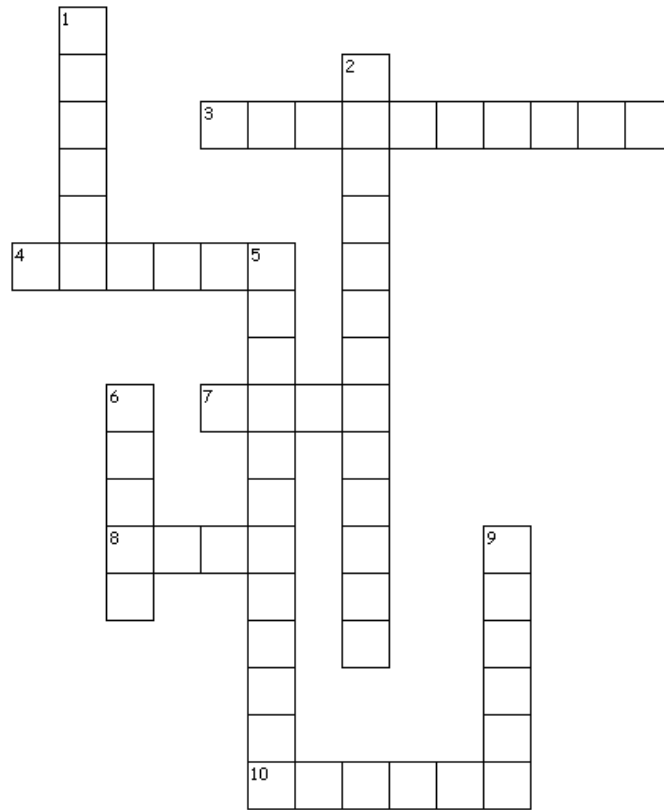
Eye Anatomy Quiz

Name _____

Label the parts of the human eye. Remember spelling counts and good luck!



Eye Anatomy



Across

3. sends visual impulses to the brain from the retina
4. a small area in the retina that provides our most central, acute vision
7. helps to focus light on the retina-located behind the iris, it is clear and colorless
8. the colored part of the eye that regulates the amount of light permitted to enter the eye
10. the innermost coat of the back of the eye, formed of light sensitive nerve endings that carry visual impulse to the optic nerve-the retina may be compared to the film of a camera-this is where the rod and cone cells are located

Down

1. the transparent convex anterior portion of the eyeball that covers the iris and the pupil and is continuous with the sclera
2. clear, jelly-like substance that forms two thirds of the eye's volume and gives the eye its shape
5. the clear, watery fluid circulating in the chamber of the eye between the cornea and the lens
6. the opening of the iris
9. the white part of the eye that protects and covers most of the eye