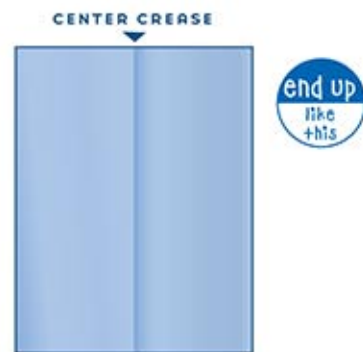
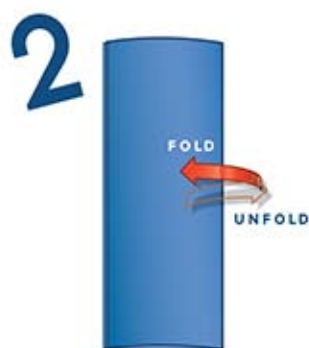
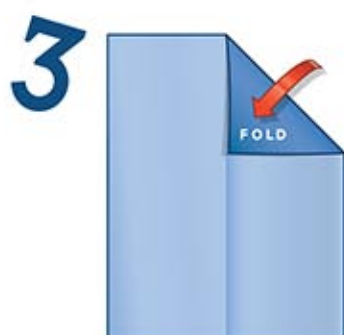




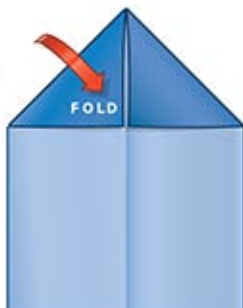
The Nakamura Lock



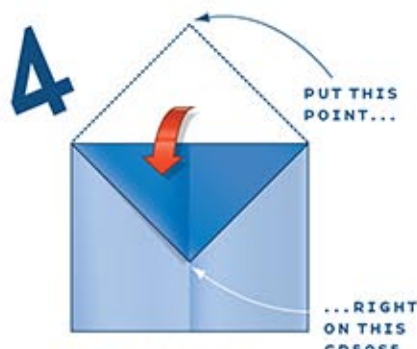
Fold in half lengthwise. Unfold to make a center crease.



Fold the upper-right corner down so the top edge sits on the center crease.



Do the same with the upper-left corner.



Fold the top point down, creasing right beneath the flaps you just made.



Put the upper-right corner on the center crease, about 1 inch (2.54 cm) above the point. Crease well.



Do the same with the upper-left corner.



more on next page

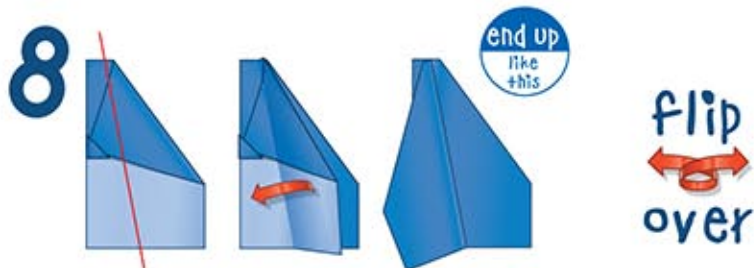




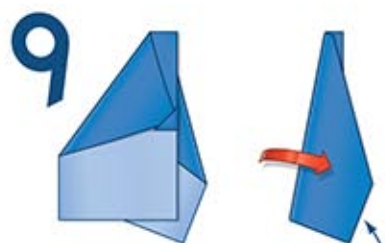
Flip the point up and fold so it's right on the center crease.



Fold in half. Make sure the edges of the left side line up perfectly with the edges on the right.



Fold just the top flap so that the crease falls on the red line shown.



Fold the other wing so that it sits right on top of the first one.

LINE UP THE EDGES WITH THE WING YOU JUST MADE

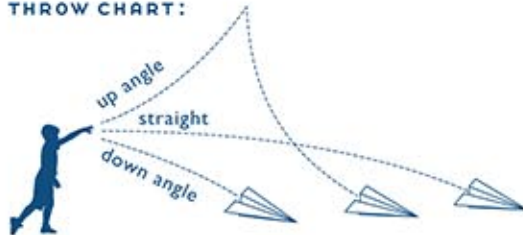
ALMOST FINISHED



Unfold the wings part way, so that your plane looks like this from the back.

	TYPE: glider/dart
	FOLDING DIFFICULTY: 1
	FLY ZONE: <input checked="" type="checkbox"/> indoor <input type="checkbox"/> outdoor
	Nakamura Lock

THROW CHART:



FLYING THE NAKAMURA LOCK

This classic paper plane flies best with a light, straight-ahead toss.

