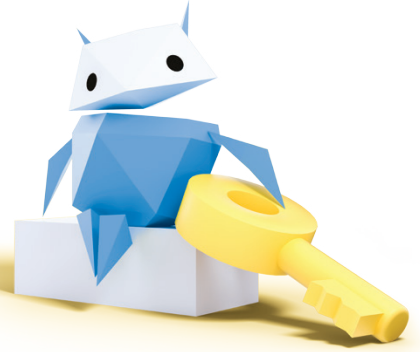


Name _____

Password Power!

Read the passwords below, mark if each is strong or weak, and explain why. Then create your own strong password.



1. Zoe's birthday is 12/16. She chooses this password: **Zoe1216**. It is:

 strong

 weak

Why? _____

2. Luis admires Ada Lovelace, writer of the first computer program. Luis sets this password: **AdaLOvelace!Go!** It is:

 strong

 weak

Why? _____

3. Mei takes the first letter of every word in her favorite song lyric. Then she replaces some of those letters with numbers or symbols that look similar. She creates this password: **lw@b01g\$3**. It is:

 strong

 weak

Why? _____

NOW IT'S YOUR TURN!

- ◆ Create a strong password for yourself:

- ◆ Think of a character from a book. Use what you know about them to create a password that would be easy for them to remember (while still hard for hackers to guess):



CREATIVE SUBSTITUTES

@ instead of A

3 instead of E

instead of H

\$ instead of S

0 instead of O

^ instead of U

1 instead of l

! instead of I

+ instead of T

% instead of P



OTHER SYMBOLS

() * & ? ~ { }