

# MEASUREMENT MISSION

The Hatchling is hiding! Only one bird can find her, but who will it be? Measure and label the length of each line below. Then fill in the chart to discover the answer!

## RULES:

Matilda won't travel more than 5 inches in all. What's the total length of her path to the Hatchling? \_\_\_\_\_

Red won't travel on any path that makes a right angle. Does his path have a right angle? \_\_\_\_\_

Chuck won't travel more than 14 inches in all. Measure his path. \_\_\_\_\_

Bomb will travel any distance but acute angles scare him. Is there one on his path? \_\_\_\_\_

## WILL HE/SHE FIND THE HATCHLING?

YES NO

YES NO

YES NO

YES NO

RED



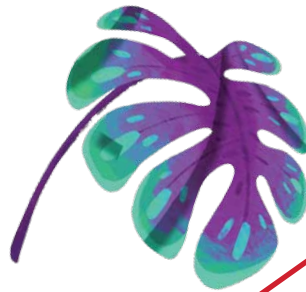
2 inches (example)



BOMB



**TIP:** This is an acute angle. It's smaller than  $90^\circ$



MATILDA



HATCHLING



**TIP:** This is a right angle. It is exactly  $90^\circ$



CHUCK



**TIP:** Obtuse angles like this are wider than  $90^\circ$

