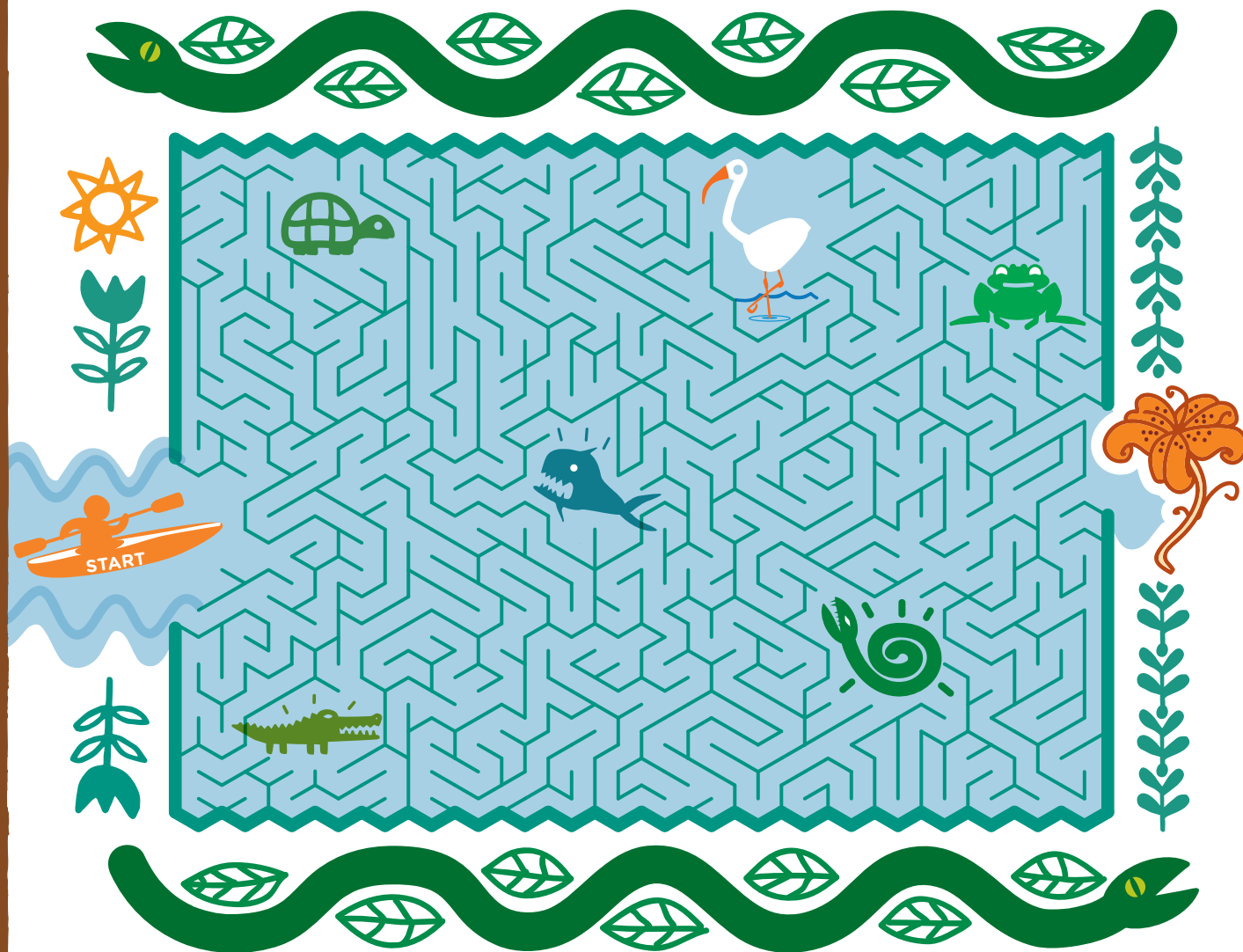




Florida Panhandle, Florida

Panhandle Paddle Maze

Help the kayaker find his way through the Cypress swamp maze, avoiding the snakehead fish, snakes, and alligators. Along the way through the lily pad pathways look for white ibis, turtles, and frogs! The prize at the end of the maze is a glimpse of the rare, endangered Panhandle Lily, also known as a Pot-of-Gold Lily.



Swamp Talk

Impress your friends and family with these Florida Panhandle facts!

- A panhandle is a strip of land that resembles the handle of a pan and usually extends from one state into another. Florida's panhandle is in the northwest part of the state. Other states with panhandles include Texas, Oklahoma, Alaska, and West Virginia.
- The cypress trees in the Florida Panhandle are called Bald Cypress because they shed their needle-like leaves so early in the season.
- Bald cypress trees have knees, which are really just knotty-looking roots.
- Experts estimate that there are as many as 1.5 million alligators in Florida.
- The largest alligator found in Florida was more than 17 feet long!

