

HOW DOES YOUR GARDEN GROW?



ANNUALS

Annuals are plants that grow during one growing season. Many of our common vegetables are annual plants and finding out which season they grow in helps you determine whether or not to plant them in a spring, summer, or fall garden.

Common cool season annual vegetables include lettuce, cauliflower, and spinach.

Common warm season vegetables include tomatoes and beans.



BIENNIALS

Biennial plants will grow for two growing seasons. These plants are harvested before the end of their life cycle.

Common biennial plants include carrots and onions.



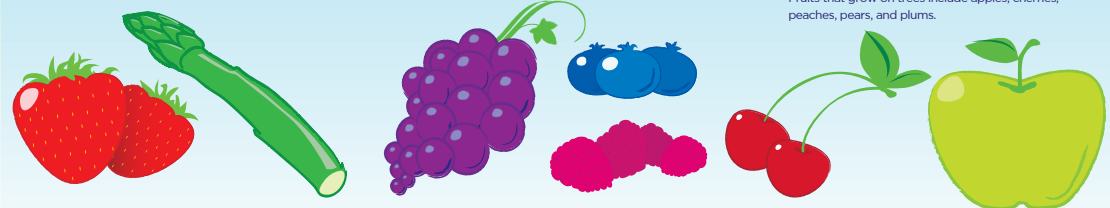
PERENNIALS

Perennials are plants whose life cycle is longer than one or two growing seasons. There are three different categories of perennials:

Herbaceous Perennials are plants that die in the winter but come back in the spring. Examples include strawberries and asparagus.

Shrubs live for many years and their stems make wood. Examples include blueberries, raspberries, and grapes.

Trees live for many years, have a single trunk, and are taller than 15 feet. Their stems make wood. Fruits that grow on trees include apples, cherries, peaches, pears, and plums.



WWW.SCHOLASTIC.COM/HARVEST

© Welch's. All rights reserved. Scholastic and logos are trademarks Scholastic Inc. ©2010 Scholastic Inc. All rights reserved. National Gardening Association logo is a trademark of the National Gardening Association. All rights reserved. P09-008



SCHOLASTIC