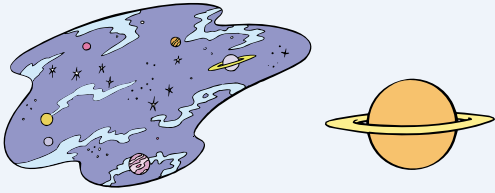




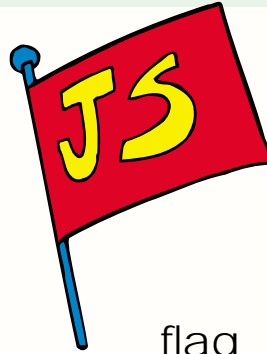
CJ's Clues

Blends are two consonants put together. If you listen to a blend, you can hear each letter, like this: **s-p-ace**, **space**.

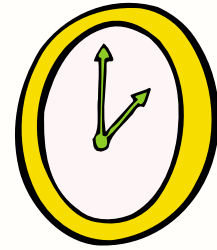


It's time to take off for the planets and stars! Let's get packing! Can you help us find things to take with us?

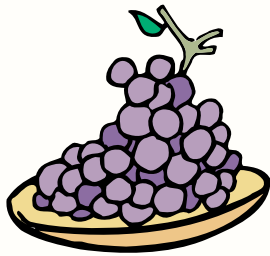
Say each picture name and circle the words that start with a blend.



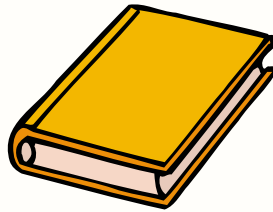
flag



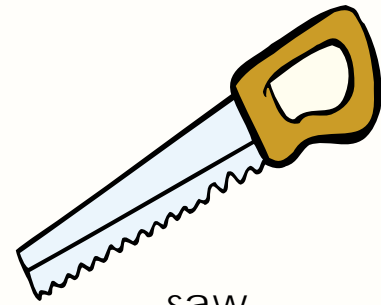
clock



grapes



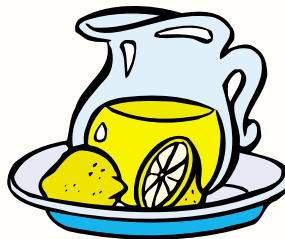
book



saw



dragon



lemonade



skate