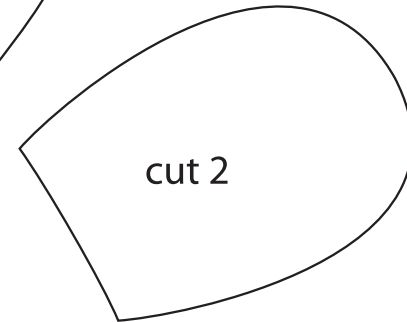
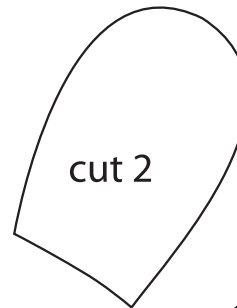
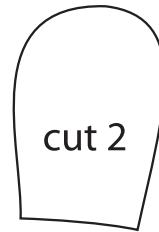
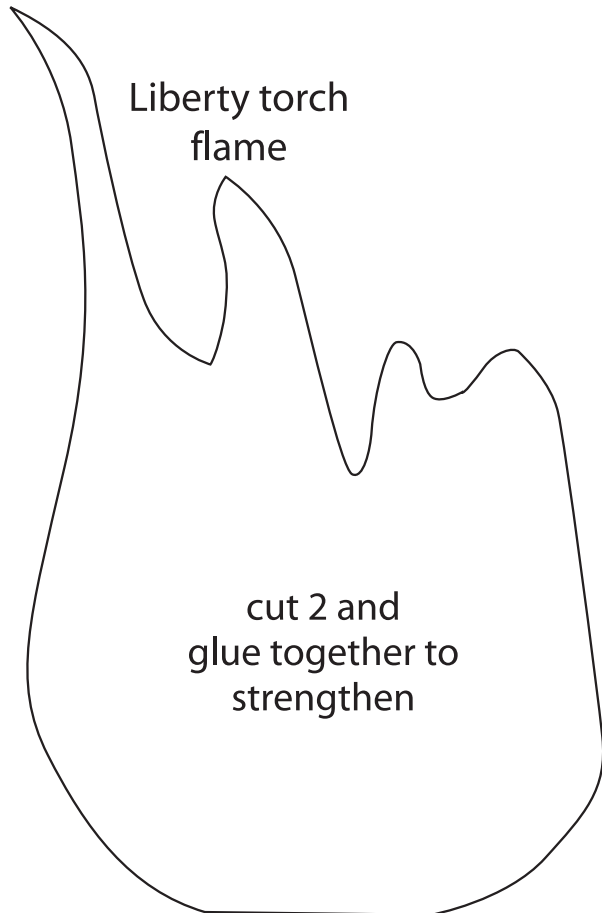


Liberty torch top decorative band:
hot glue to base decorative band.

$\frac{1}{2}$ inch tall
increase length as needed

Liberty torch top decorative band (lower layer):
hot glue to top of torch base

$1\frac{1}{2}$ inches tall
increase length as needed



Statue of Liberty
crown detail
Glue to crown front.

Note: actual size

